

INTRODUCTION

The perfect coffee experience depends on a perfectly cleaned coffee machine. Clean your coffee machine at least once a day and more frequently if necessary.

The automatic cleaning process involves cleaning the coffee machine and cleaning the cooling unit.

Required accessories

- Cleaning tablets
- Microfiber cloth
- Brush set
- Collecting container (only on machines with no wastewater connection)

Additional accessories required for **machines with a milk system**

- Milk system cleaning agent
- With the SU05: cleaning container



NOTICE

Soiled accessories

Soiled accessories can have a negative affect on the functionality of the machine and the quality of the drinks produced.

- a) Clean the accessories by using the 5-step method.
- b) Follow the applicable instructions for accessories.



The removable parts of the coffee machine are not dishwasher-safe.

5-step method

1. Remove coarse dirt with a brush or paint brush.
2. Soak the parts in hot water with a mild cleaner.
3. Wash the parts.
4. Rinse the parts thoroughly.
5. Dry the parts.



STARTING THE CLEANING PROCESS



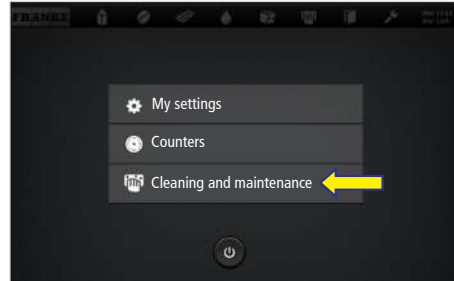
When the cleaning cycle is complete, the machine either switches back to the maintenance level or the energy saving mode. Your service technician can set the desired option for you.



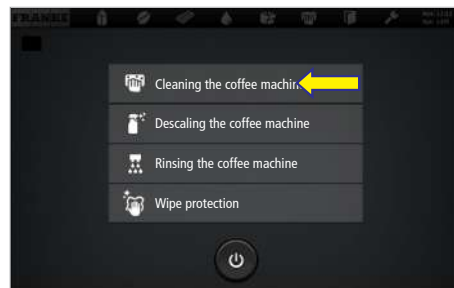
1. Tap the Franke logo at the top left.



2. Entering the PIN 1111.
3. Press OK.



4. Select **Cleaning and maintenance**.



5. Tap **Clean Coffee Machine**.
6. Confirm message with **Yes** to begin the cleaning process.
7. Follow the instructions on the user interface and confirm the individual steps by selecting **Next**.
⇒ The machine shows the next step.



For machines without a wastewater connection, have the collecting container ready and place it on the drip grid when the corresponding prompt appears on the screen.



CLEANING WEEKLY



In addition to the daily cleaning process, clean the machine components listed in this section at least once a week. Clean the machine immediately if you find that it is dirty or clogged. Follow the cleaning instructions when doing so.

Cleaning the surface of the machine

1. Clean the surface of the machine with a damp cloth.
2. If necessary, use a mild cleaner. **NOTICE! Do not use abrasive cleaners.**

Cleaning the drip tray and drip grid

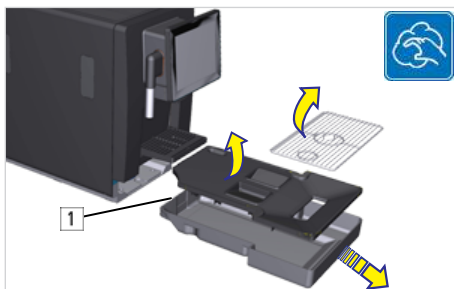


NOTICE

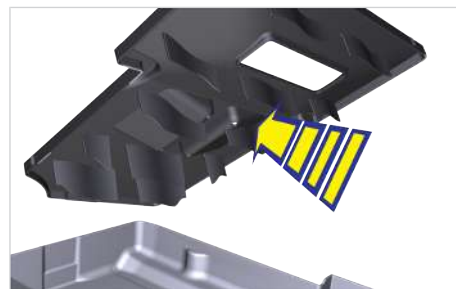
Escaping liquid

Applies to machines with a wastewater connection! On machines with a wastewater connection, if water remains in the drip tray, this can escape when the drip tray is removed.

- a) Before removing the drip tray, ensure that the remaining water has drained.



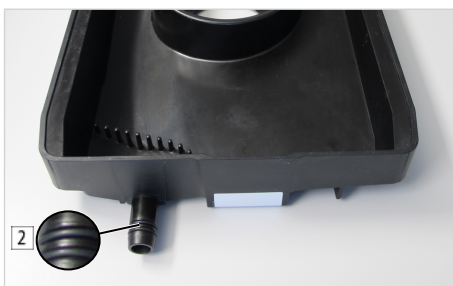
1. Clean the drip tray and drip grid using the 5-step method.



2. Thoroughly clean the projecting features on the underside of the drip tray lid.



The rear [1] of the drip tray must be clean and dry, both inside and out. If it is not, this may cause the drip tray's continuous level sensor to issue an alert in error.



If the coffee machine has been connected to the wastewater system, there are two O-rings [2] on the rear of the drip tray. These must be moistened with water so that the drip tray can lock in place properly. Otherwise, the capacitive sensor cannot detect the drip tray.

Cleaning the water tank (if present)



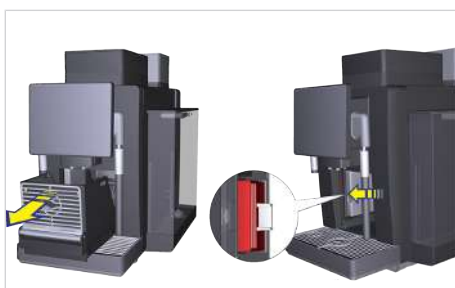
Inspect the water tank daily for dirt and limescale. If there is any dirt or limescale, clean it off immediately.



1. Remove and empty the water tank.

2. Clean the water tank using the 5-step method.

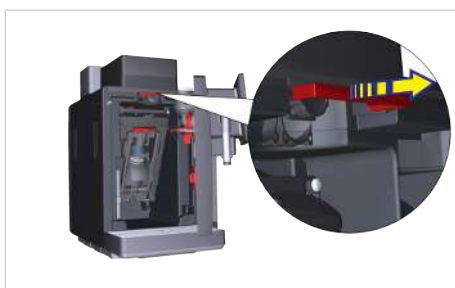
Cleaning the powder hopper (if present)



1. Remove the grounds container.
2. Open the door lock (option) with the key.
3. Press the locking mechanism on the inside and open the door.



5. Lift up the powder hopper and remove it.
6. Empty the powder hopper.
7. Clean the powder hopper with a cloth. Use detergent if necessary. Wipe the inside of the hopper with a dry cloth.
8. Replace the powder hopper.
9. Push in the locking slide.
10. Close the door and insert the powder hopper.



4. Pull the locking slide.

Cleaning the screen

1. Tap the **Settings** symbol at the top left.
2. Select **Cleaning and maintenance**.
3. Select **Wipe Protection**.

⇒ The operating interface is locked for 20 seconds.

4. Clean the surface with a damp cloth.